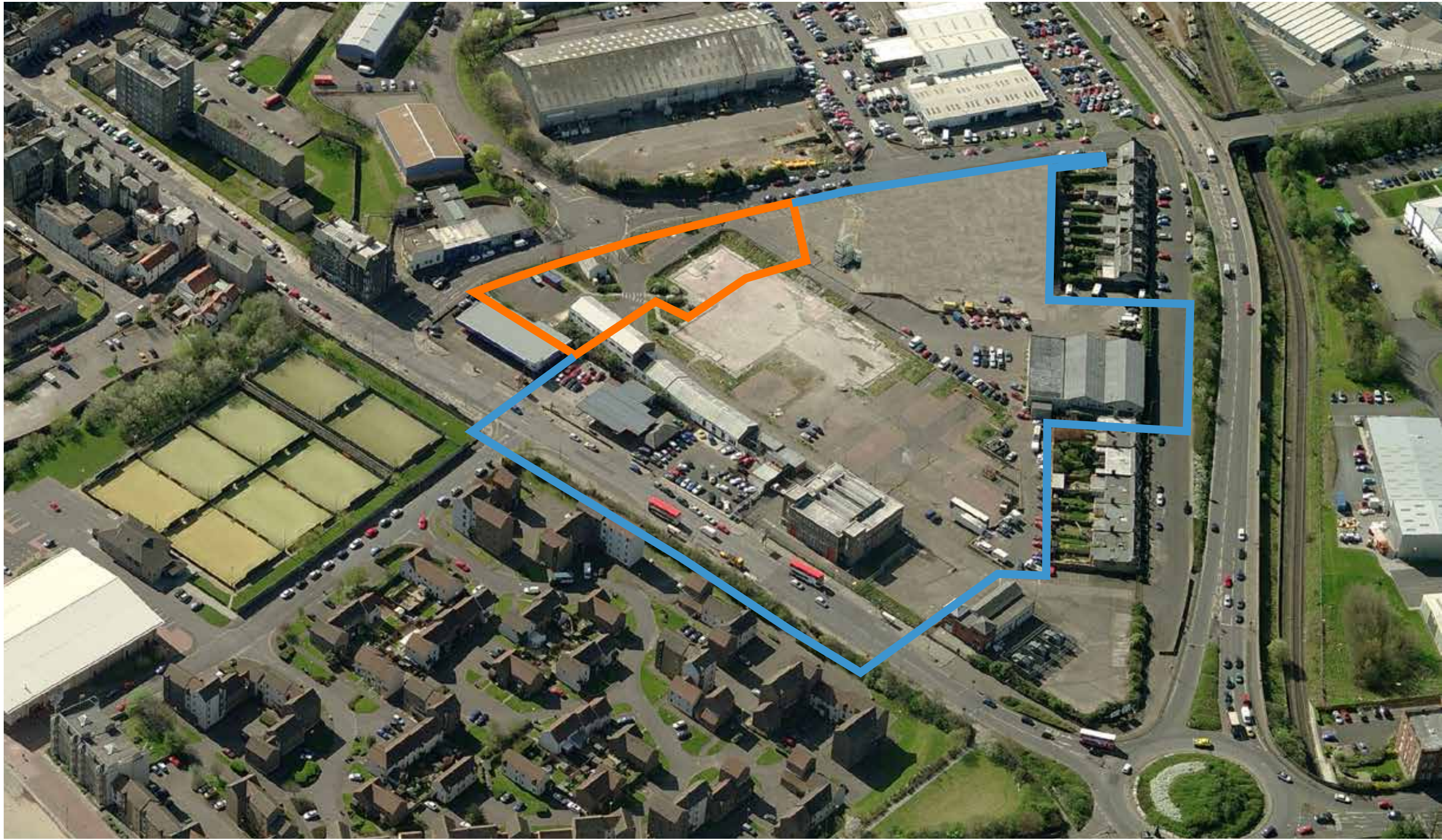




Proposed Ground Floor Plan



Local Character

The built character of Portobello is varied in age and style. The local area is made up of tenements, terraced housing, villas, light industrial units and modern interventions and also includes more unique elements such as the brick kilns near the promenade.

Fishwives Causeway is currently predominantly an industrial area but is fronted on the High Street by a traditional tenement and boasts stunning views towards Arthur's Seat in the West and the Firth of Forth in the East.

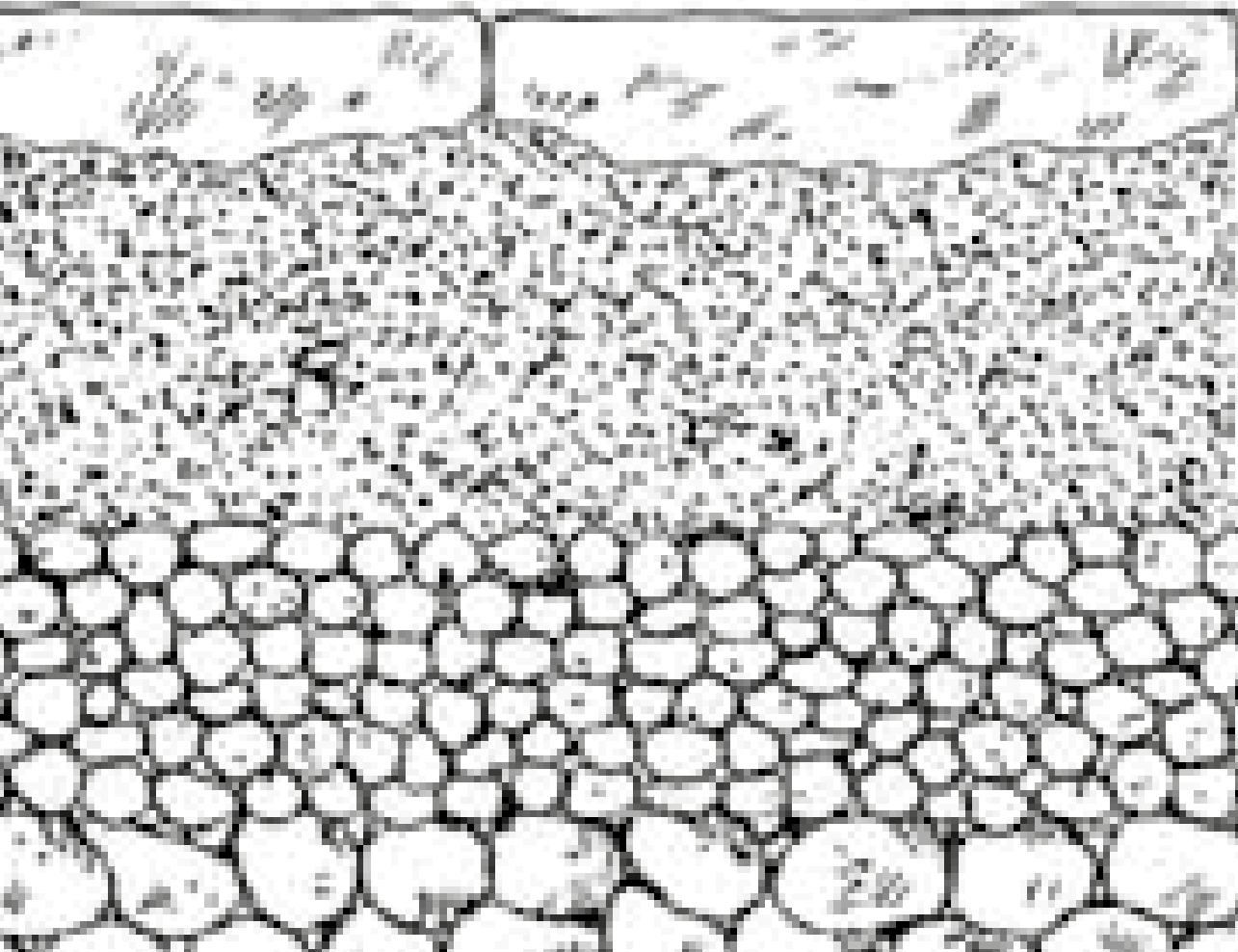
The proposed designs aim to take on elements of the existing Portobello character, such as the rhythm created with window projections on the traditional tenements and the use of materials in the brick kilns, while working to create the sense of enclosure and successful street frontage that Fishwives Causeway is currently lacking.



History of Fishwives Causeway



Historic photo of Fishwives Causeway



Fishwives Causeway was originally a Roman Road



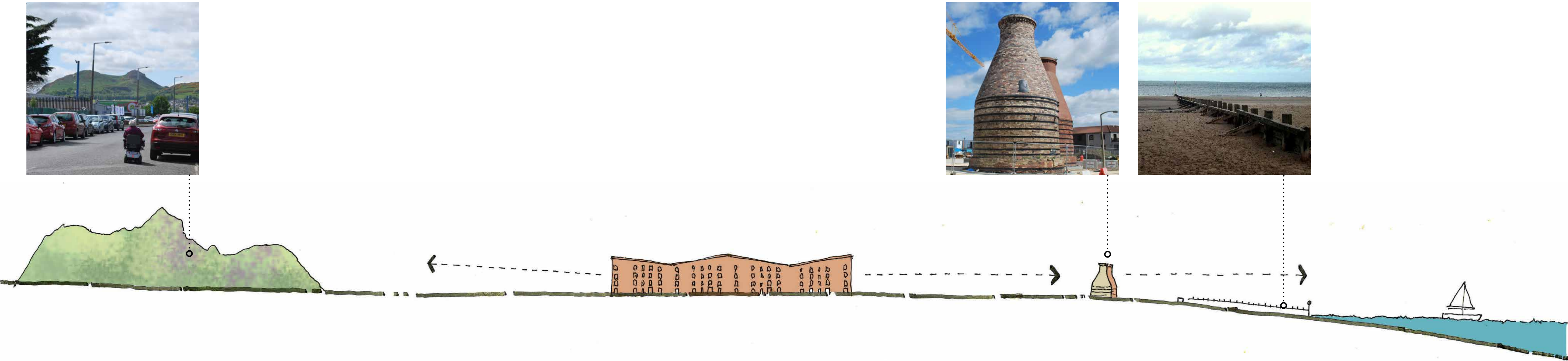
The site was once a clay works supplying the Portobello brick kilns.



Historic image of a Portobello fishwife. The street was named after this local trade.

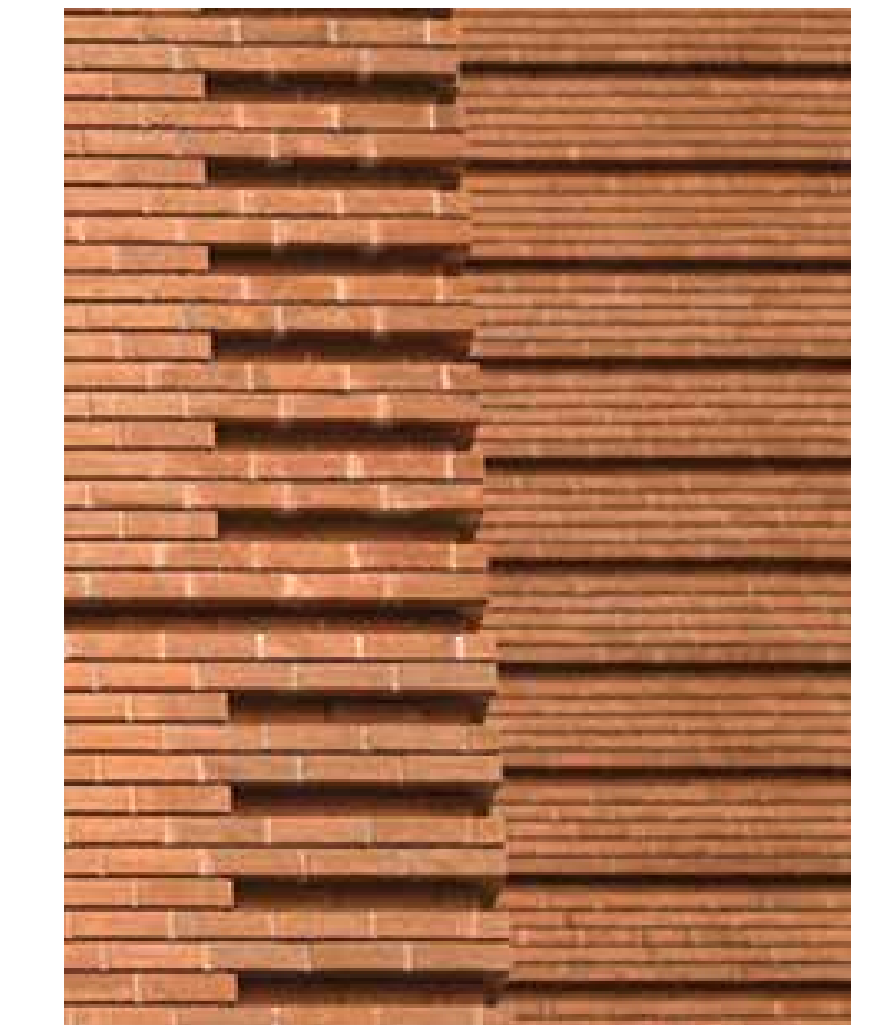


Proposed view along Fishwives Causeway





Design Inspirations

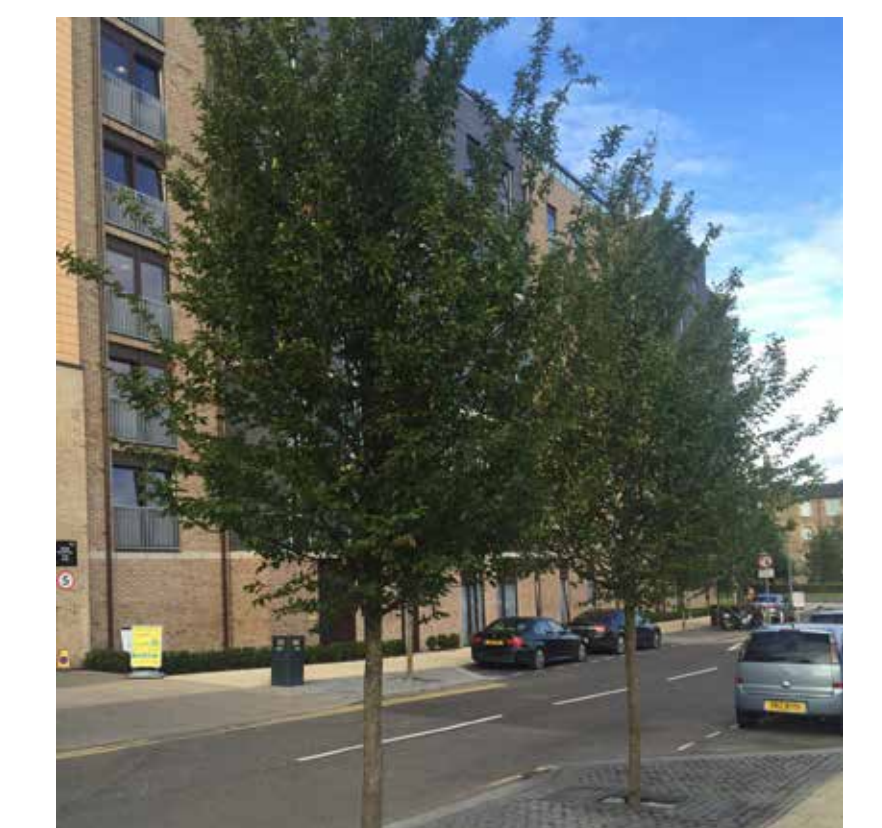


Brick will be used imaginatively, inspired by the Portobello brick kilns and traditional basket weaving.

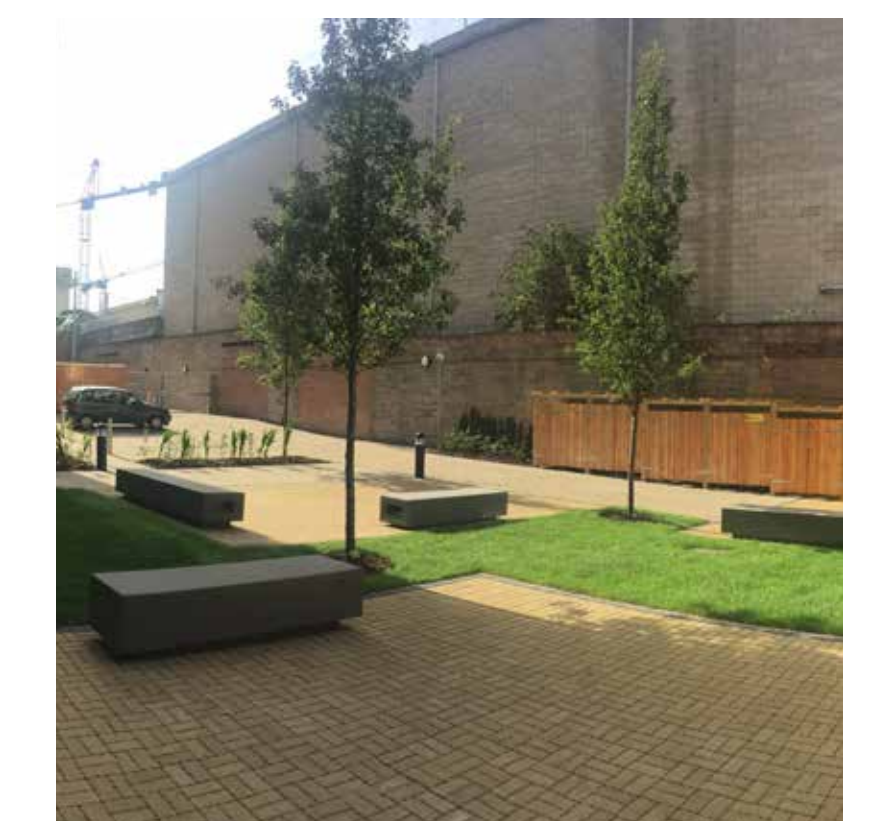


A contemporary take on the treatment of window and door reveals as seen on local tenements and 20th century buildings.

Landscape



Planting will be natural and use local species inspired by the view to Arthur's seat.



High quality hard landscaping will help define public and private space.

Criden

7N
ARCHITECTS