

Frequently Asked Questions

Who are the Playspace Group?

In 2012 a small group of parents got together to see if they could work with the school to improve the playground. They are a separate subgroup of the PSA. There is expertise in the group in architecture, pupil consultation, public art, fundraising and landscape architecture and a huge desire to improve the playing area. The make up of the group has changed over time and we still welcome people to get on board and help out where they can. The PSA’s fundraising is vital to the group to make the improvements.

Why does the City of Edinburgh Council not pay for these improvements?

The CEC’s budgets for school improvements are tight and do not extend to the kind of improvements that we feel are needed for the playground to make it a vibrant imaginative space – if we want it to happen we need to make it happen ourselves.

How can I help?

You can help out by:

- Getting involved in the PSA to organise fundraising activities
- Offering your help to the Playspace Group
- Supporting the fundraising by the PSA – every cake sold helps!

What do all these different groups I hear about do?

Playspace Group – Group of volunteer parents working specifically on the playground improvements , writing funding applications, liaising with the school, arranging work to be carried out, liaising with the PSA on available funds for the playground improvements.

PSA – Group of volunteer parents raising funds for school activities that could not take place without their input, such as buying instruments, supplementing school camps, making playground improvements. The fundraising activities include arranging Christmas cards, selling school uniforms, running school fairs, putting on events like the Variety Show.

Parent Council – Advisory board of parents who advise on school matters and issues affecting the school. For further information on all school matters you can follow the Facebook Page - Towerbank School Community Group.

Contact for PSA : towerbankpsa@googlemail.com
Contact for Parent Council : parentcouncil@towerbank.org.uk
Contact for Playspace Group : playspace@towerbank.org.uk or Towerbank Playspace (on Facebook)

Please tear off and return if you can offer any help

I can help with:

- PSA and fundraising activities
- Playground Group

Name:

E mail:

Phone No:

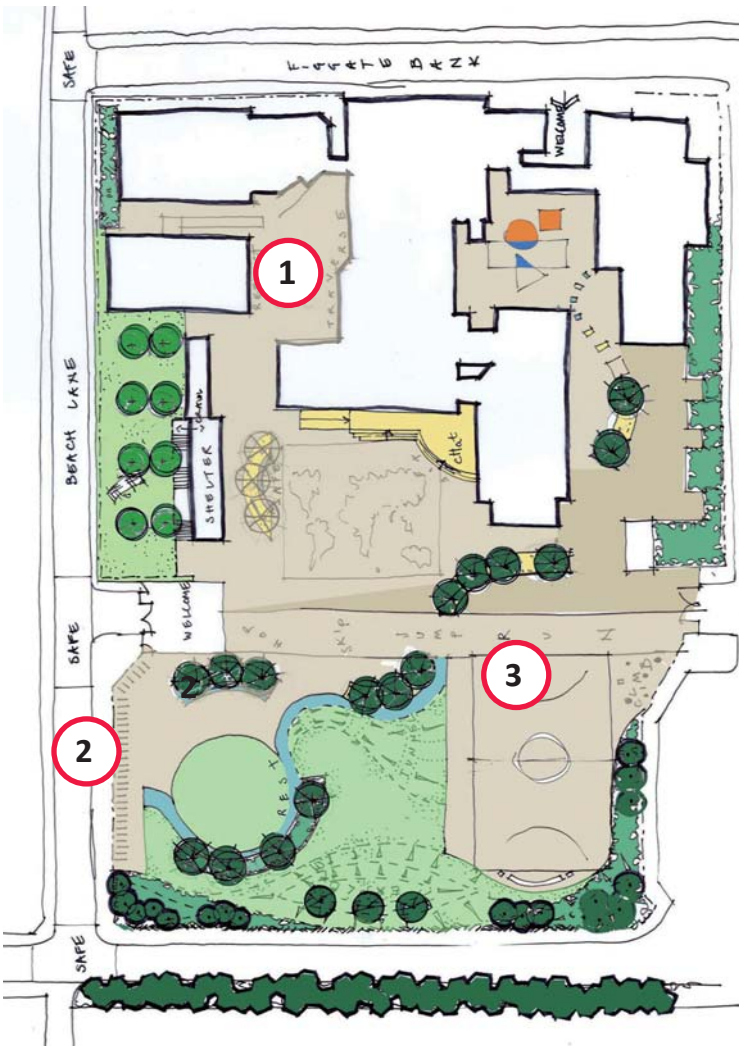
Please hand this back into the school office.

Towerbank Playground Update



Update on the playground improvements

As you may know the Playspace Group have come up with a plan for a vibrant and exciting playground for our children at Towerbank Primary. The school is right behind it and we just need to find the funds to make it happen. There isn’t enough money yet - but we have started the improvements and we need your help to raise the funds.



What happened in 2013

In the playground we now have:

- 1 a climbing wall
- 2 scooter racks
- 3 new sports pitch markings

The cost of these improvements was just under £6,000 and it is thanks to the PSA for organising fundraising events like the Summer Fair, the Variety Show, cake sales and lots of other fundraising activities over the year that this has been possible.

Not forgetting the contributions of everyone who has bought cakes, thrown balls into hoops and attended shows throughout the year.



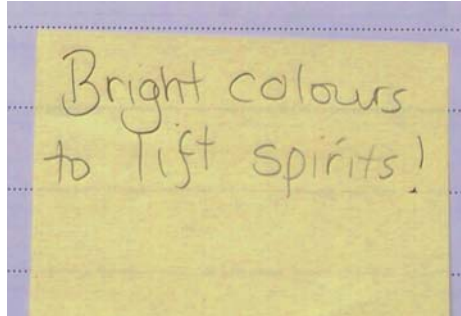
This is a sketch of what the shelter might look like - with more spaces to sit, improved access, brighter and vibrant colours and artworks.



What next?

The next improvement planned is doing up the shelter. This would make a huge difference to the playground, giving the children somewhere pleasant to go when the weather is harsh or they feel in need of some cover.

Last year students at Edinburgh College of Art (ECA) took a look at the shelter and came up with some possible ideas. In February the Playspace Group went in and chatted to the children and the school management team about how they would like to use the shelter and what it could look like. We got some brilliant ideas – with common themes being colour, light and better seating.



Whilst the school can help to fund the basic repairs of the shelter, to get something great we have applied for funds from Awards for All. We need to raise around £13,000 that we estimate it could take to upgrade the shelter. Most of that could come from Awards for All (their maximum grant is £10,000). The school has offered to meet the basic repairs and we are looking for just over £2,000 from the PSA funds.

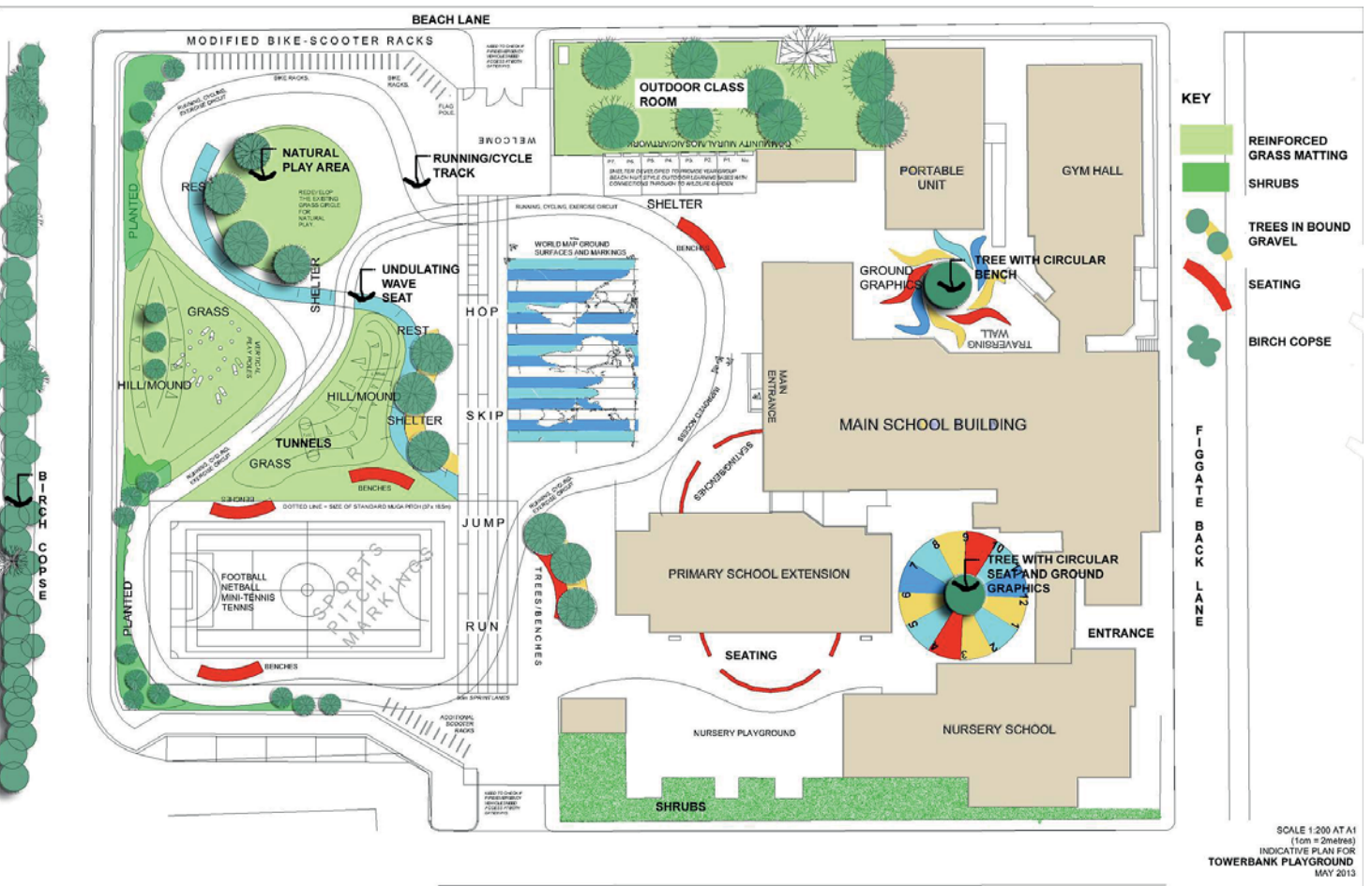
There is no guarantee that we will get the funds from Awards for All (we have been turned down by other funders) but we are hopeful. We will keep you posted about how the application goes. If all goes according to plan we will start work on the shelter early this Summer and we will need lots of volunteers to get involved.

How do we make the rest of the improvements happen?

Money, money, money

We need to raise funds to make the improvements we want in the playground. We are currently pulling together a funding application for the Active Spaces Fund. This focuses on sport and health. The application needs to be in by July.

We still need your support at PSA events and fundraising. If you have a new idea or can help with organising some of the fundraising activities then please get in touch with the PSA. Any help you can offer is greatly appreciated. If you just want to donate some money then again please just get in touch with the PSA.



How do you think it could look in the future?

