



TIMBER KNEE RAIL



CLOSE BOARDED TIMBER FENCE



MARSHALLS CONSERVATION PAVING
TO STORE ENTRANCE

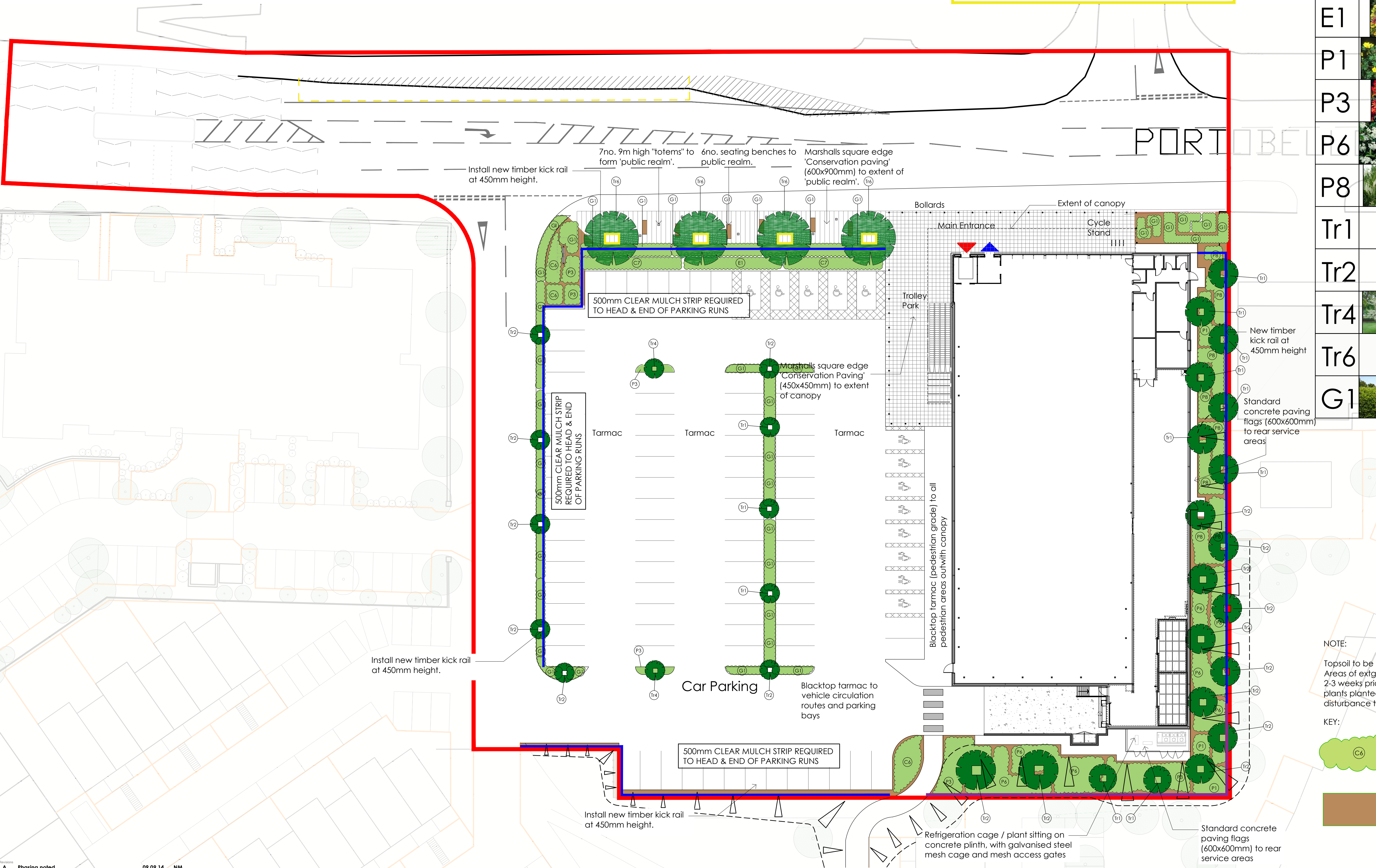


TREE PLANTER WITHIN PUBLIC REALM

PLANTING SCHEDULE

All plants to BS 3936.
Planted as per specification

REF		PLANT NAME	PLANTING DENSITY (m ²)	SIZE HEIGHT (mm)
C6		Choiya Ternata Sundance	4	600
C7		Ceanothus Yankee Point Blue	4	400
E1		Escallonia Laevis Gold Brian	4	400
P1		Potentilla Fruticosa	5	450
P3		Pieris Forest Flame	5	500
P6		Pyrocantha Rogersiana	4	400
P8		Prunus Laurocerasus (Lotto Iuyken)	5	400
Tr1		Sorbus Aucuparia (Mountain Ash)	12 No.	1800-2200 when planted, ultimate height 12000+
Tr2		Betula Pendula (Birch)	18 No.	1800 when planted, ultimate height 8100+
Tr4		Crataegus Crus-Galli Inermis (Thornless Cockspur Hawthorn)	2 No.	1500 when planted, ultimate height 6000+
Tr6		Carpinus Betulus Fastigiata (Hornbeam)	4 No.	1800-2200 when planted, ultimate height 12000+
G1		Griselinia Littoralis (Hedge)	600mm apart, 450mm between rows, staggered double row	1200 once fully grown



NOTE:
Topsoil to be supplied strictly in accordance with the specification
Areas of extg landscaping to be sprayed with systemic weed killer 2-3 weeks prior to planting. Levels to be made up with topsoil and plants planted in locally excavated holes with minimum disturbance to the tree roots of existing trees.

KEY:
 Hatch denotes area of ground to receive selective and mixed Planting from the approved list.
 75mm Bark Chipping Mulch