

**NOTES**

Extend existing yellow lines on Ashley Terrace by 13m on east side of street and 8m on the west side of street, as shown.

The existing lines shown on this plan do not match what is currently painted on the street which is why the measurements look incorrect.

We have taken the measurements shown from what is actually painted on the ground.

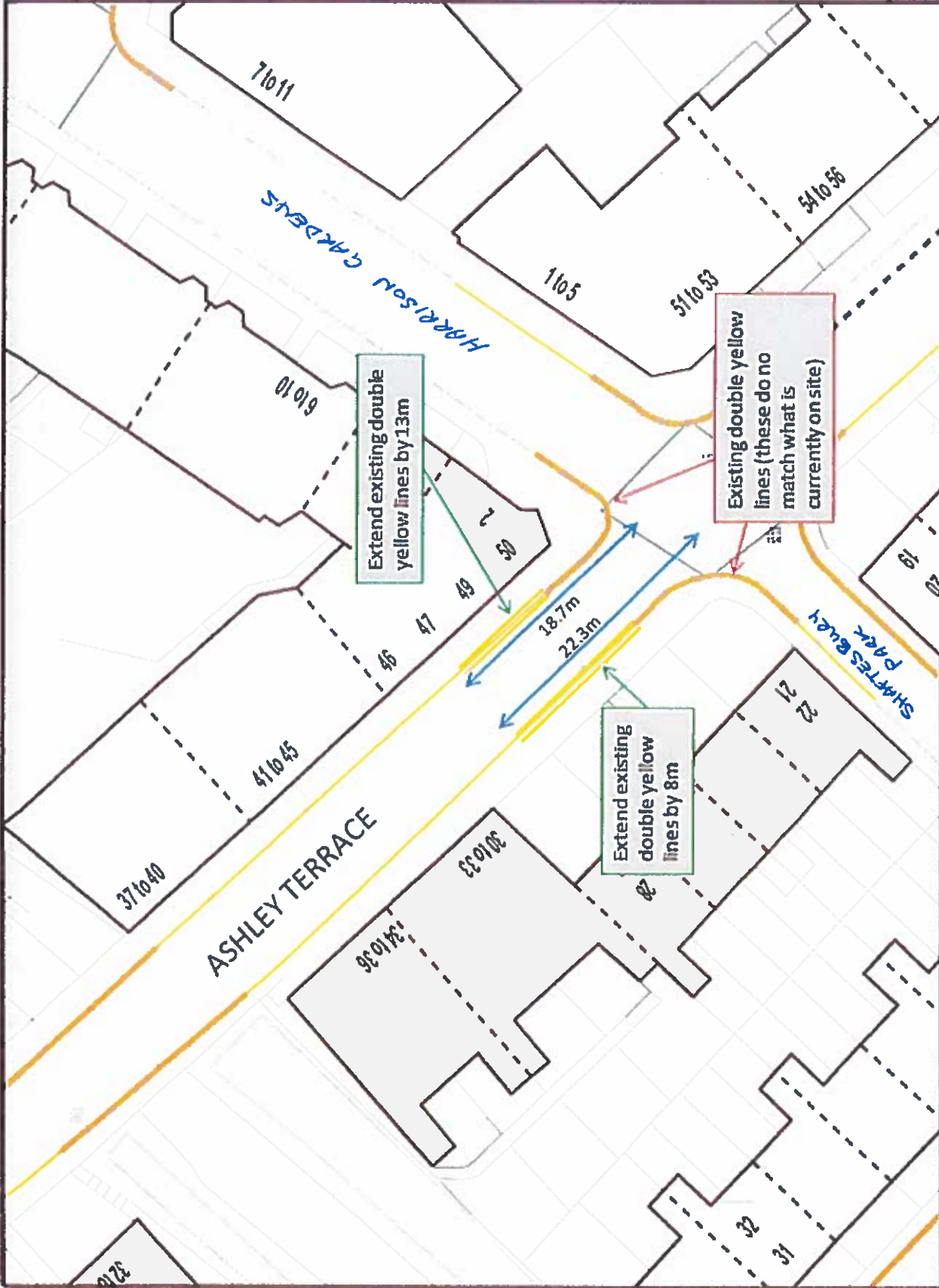


Produced using AutoCAD 2015

Date: 08/09/2015

Drawn By:

Dwg No.:

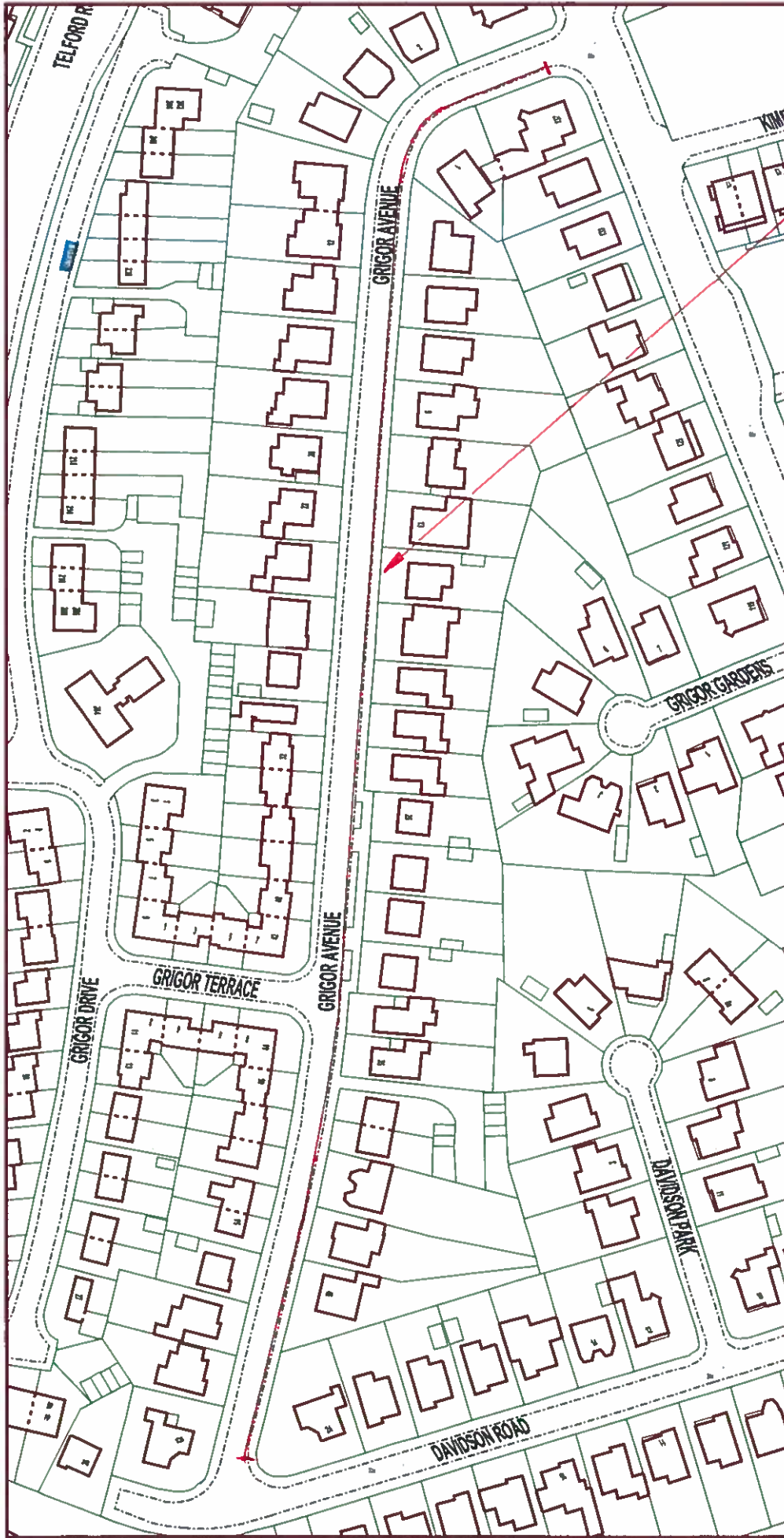


1:500



THE CITY OF EDINBURGH COUNCIL  
 Planning & Community  
 4 East Market Street, Edinburgh, EH1 1JH  
 Tel: 0131 222 2000

Ashley Terrace  
 Double Yellow Lines



NOTES

REDEFINE LOCATION OF  
SINGLE YELLOW LINE  
RESTRICTIONS



Produced using Smallworld GIS

The material contained in this plot has been reproduced from an Ordnance Survey map with the permission of the Controller of HMSO, Crown Copyright.

**EDINBURGH**

THE CITY OF EDINBURGH COUNCIL

City Development Department,  
1 Cockburn Street, Edinburgh EH1 1ZL  
Tel: 0131 200 2000

Scale: 1:1500



Date: 13/10/15

Drawn By:

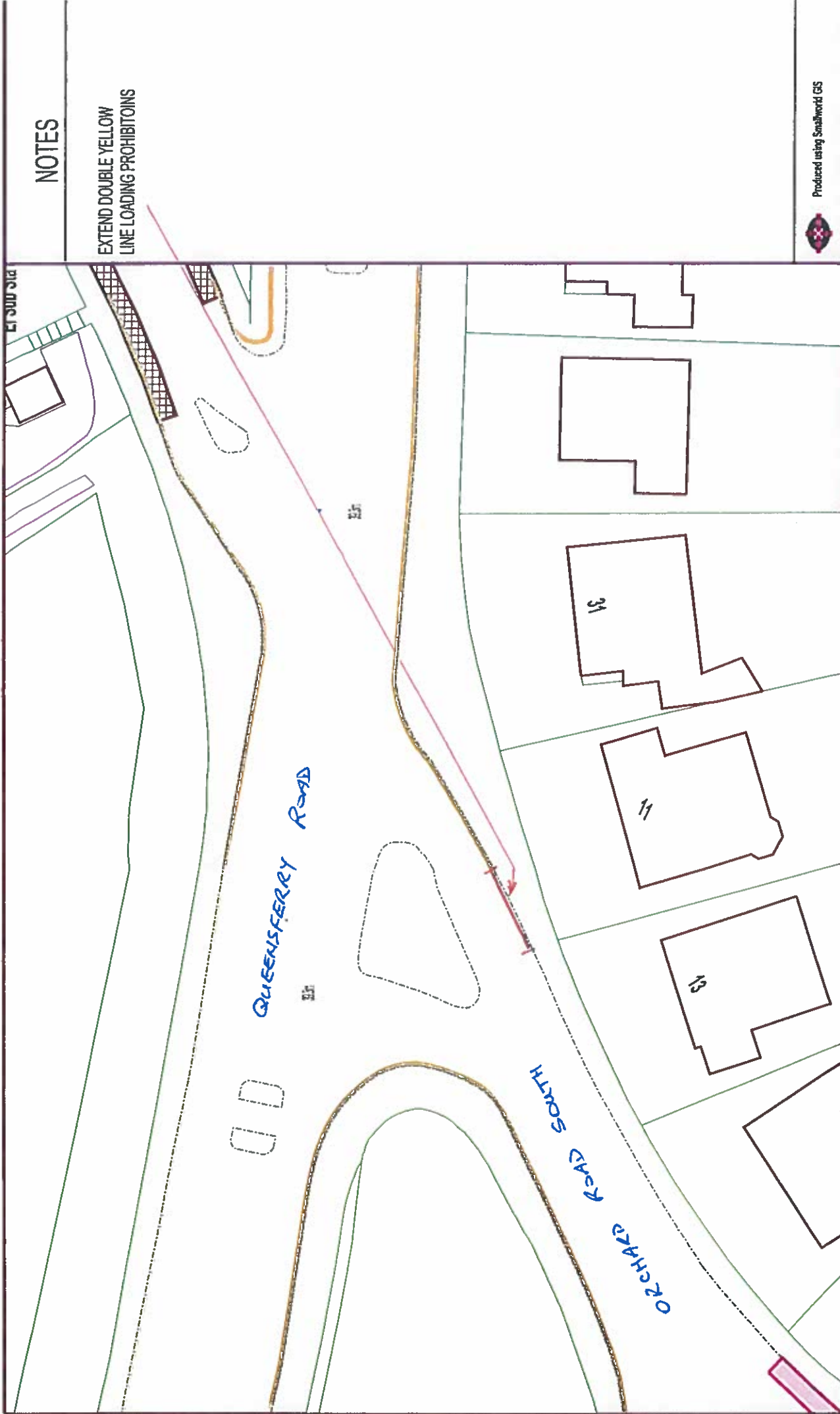
Drawing No:

WAITING RESTRICTIONS  
GRIGOR AVENUE









**NOTES**

EXTEND DOUBLE YELLOW  
LINE LOADING PROHIBITIONS

Produced using Smallworld GIS

Date: 13/10/2015

Drawn By:

Dwg No:



1:500

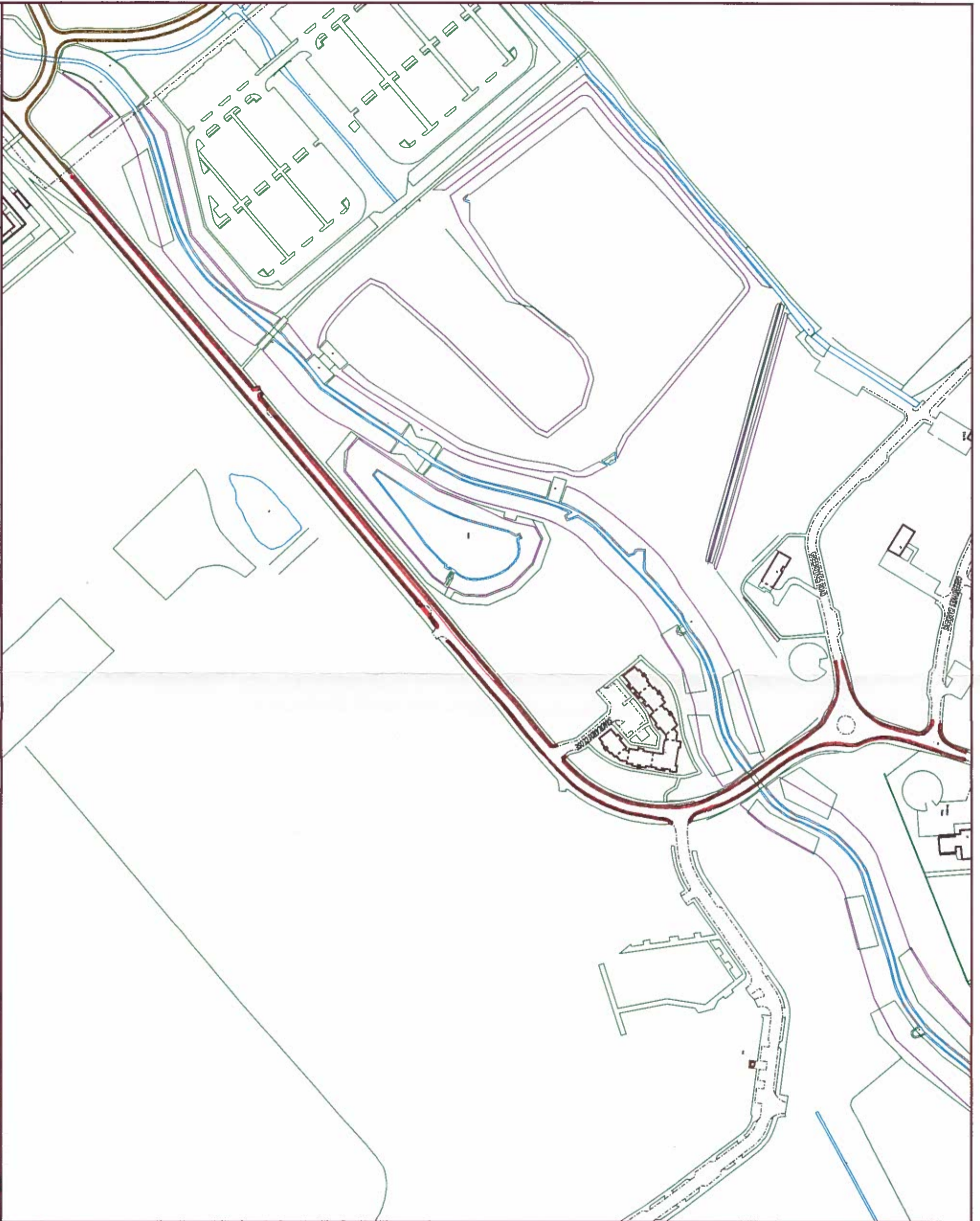
The material contained in this plan has been reproduced from an Ordnance Survey map with the permission of the Controller of HMSO. Crown Copyright.

**WAITING RESTRICTIONS**  
**ORCHARD ROAD SOUTH**

**EDINBURGH**  
THE CITY OF EDINBURGH COUNCIL  
Services for Communities,  
4 East Market Street, Edinburgh EH1 1JH  
Tel: 0131 200 2000



**NOTES**  
INTRODUCE DOUBLE  
YELLOW LINE WAITING  
RESTRICTIONS



**EDINBURGH**

THE CITY OF EDINBURGH COUNCIL  
City Development Department  
1 Cochrane Street, Edinburgh EH1 1ZL  
Tel: 0131 755 7300

**WAITING RESTRICTIONS**  
**LITTLE FRANCE DRIVE AREA**

Scale: 1:2500



The material contained in this plan has been reproduced from an Ordnance Survey map with the permission of the Controller of HMSO, Crown Copyright.

Produced using Smartworld GIS

Date: 24/09/15

Drawn By:

Drawing No:





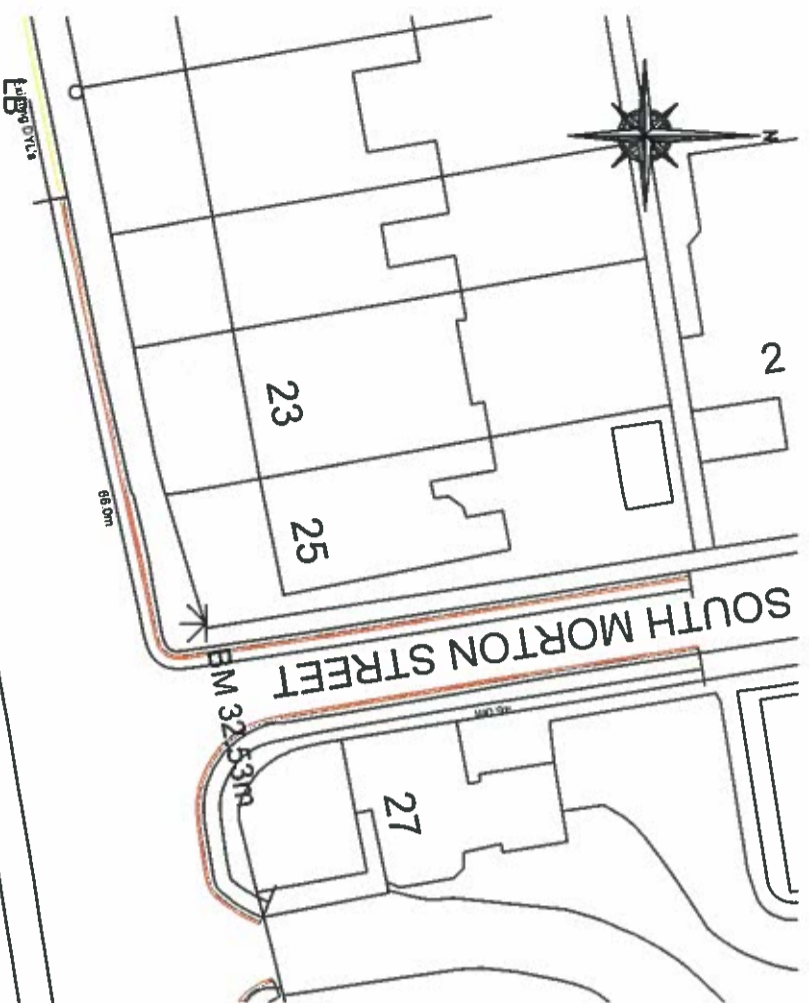
Location 2 : South Morton Street

Scale 1:500



Location 3 : Queens Bay Crescent

Scale 1:500

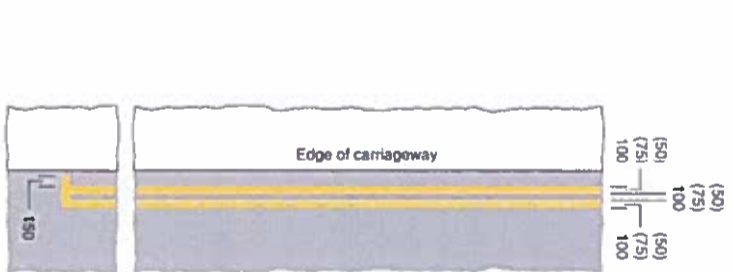


Location 1 : South Morton Street

Scale 1:500



Location Plan  
Scale 1:1250



- 1018.1
- (a) Waiting of vehicles on a side of a length of road prohibited at any time during a period of at least 4 consecutive months; or
  - (b) Stopping of vehicles in a lay-by prohibited except in emergency

Item	
1	Regulations: 4
2	Directions: 7, 18(1), 22, 24(1), 24(4)
3	Diagrams: 607.2, 637.3, 640, 642.3, 650.3, 651, 653.1, 1082
4	Permitted variants: None
5	Illumination requirements: Schedule 17, Item 12

<p><b>EDINBURGH</b> THE CITY OF EDINBURGH COUNCIL</p> <p>The City of Edinburgh Council East Neighbourhood Office 101 Middle Mains Road, Edinburgh EH16 4ZG Tel. No. 0131 - 529 - 3111</p>	<p><b>East Neighbourhood Environment Team</b></p>	<p><b>South Morton Street &amp; Queens Bay Crescent Parking Restrictions</b></p> <p>Date: June 2015 Scale: As Shown</p> <p>Job No. _____ Drawn by: KDA Checked by: AM</p> <p>DRG. No. W17/DYL2/June 2015</p>										
<table border="1" style="width: 100%;"> <thead> <tr> <th>REVISION</th> <th>DETAILS</th> <th>BY</th> <th>DATE</th> <th>CHECKED</th> </tr> </thead> <tbody> <tr> <td> </td> <td> </td> <td> </td> <td> </td> <td> </td> </tr> </tbody> </table>			REVISION	DETAILS	BY	DATE	CHECKED					
REVISION	DETAILS	BY	DATE	CHECKED								