

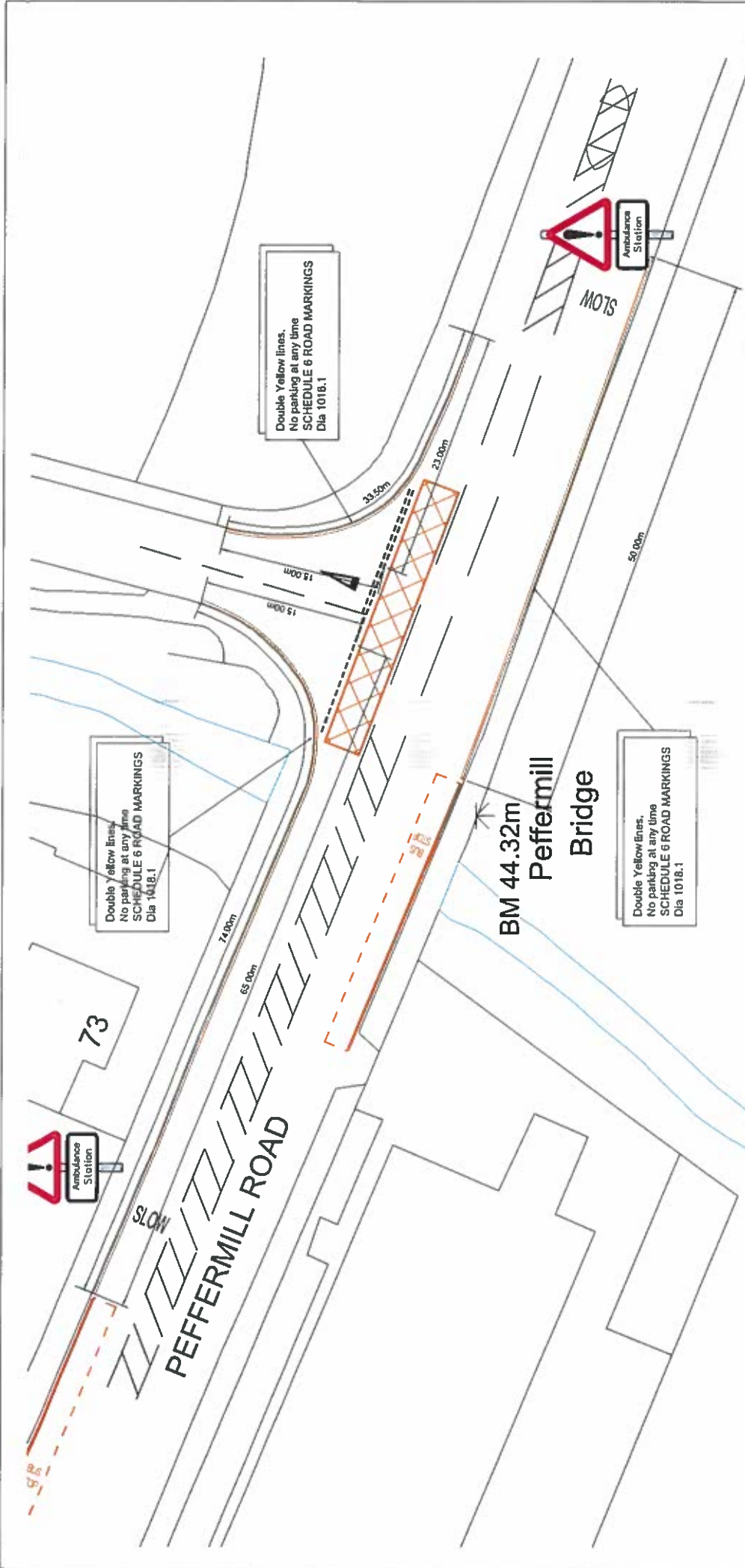
**EDINBURGH**  
THE CITY OF EDINBURGH COUNCIL

The City of Edinburgh Council  
East Neighbourhood Office  
101 Niddrie Mains Road, Edinburgh  
EH16 4ZG Tel. No. 0131 - 529 -3111

**BRUNSTANE ROAD  
PARKING RESTRICTION  
EXTENSION**

Date: April 2014  
Scale:  
Job. No.  
Drawn by: KDA  
Checked by: AM

**Drg No. W17/002/RM/APR 2014**



**KING'S HAUGH  
PARKING RESTRICTIONS  
Scale 1:250**

Ref	Description	Date	By	Drawn



The City of Edinburgh Council  
East Neighbourhood Office  
101, Market Street, Edinburgh  
EH16 4ZG Tel. No. 0131-553-3111

**KING'S HAUGH  
PARKING RESTRICTIONS**

Date: Aug 2014  
Scale: As Shown  
Job No.  
Drawn by: JCA  
Checked by: JLN

**Drg No. W17/003/RM/Apr 2014**

DRG. NO.

SERVICES FOR COMMUNITIES

DRG. NO.  
NOTES:

220

222

PAISLEY DRIVE

Ne  
2

6.0

10.0

10.0

6.0

REV	DATE	BY	CHKD

**EDINBURGH**  
THE CITY OF EDINBURGH COUNCIL

SERVICES FOR COMMUNITIES  
The City of Edinburgh Council  
101 Market Street  
Edinburgh EH1 1JQ  
Tel: No. 011-277 7111

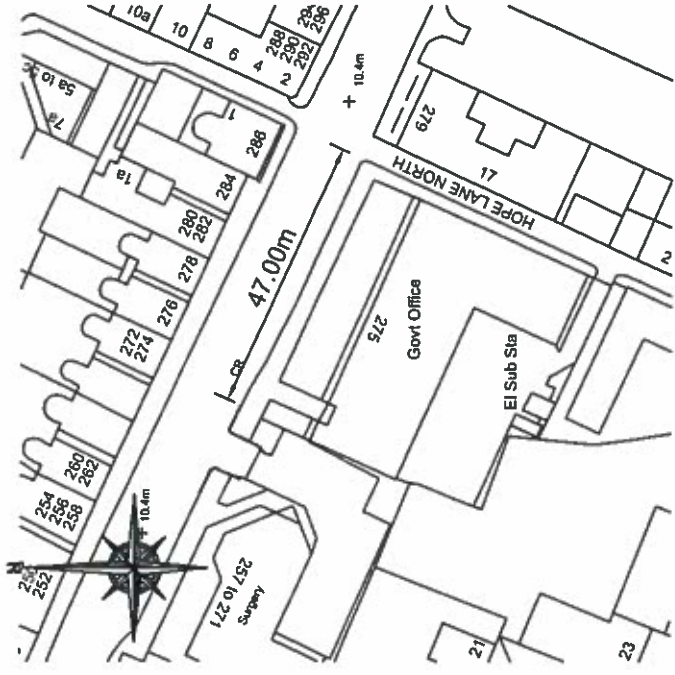
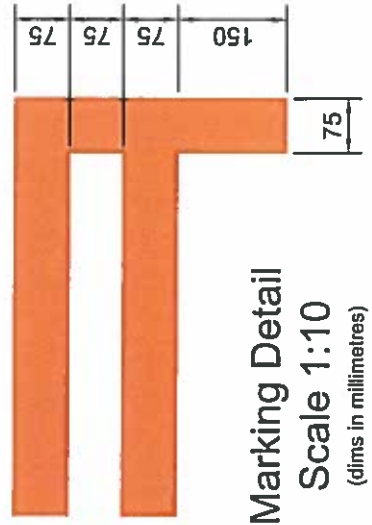
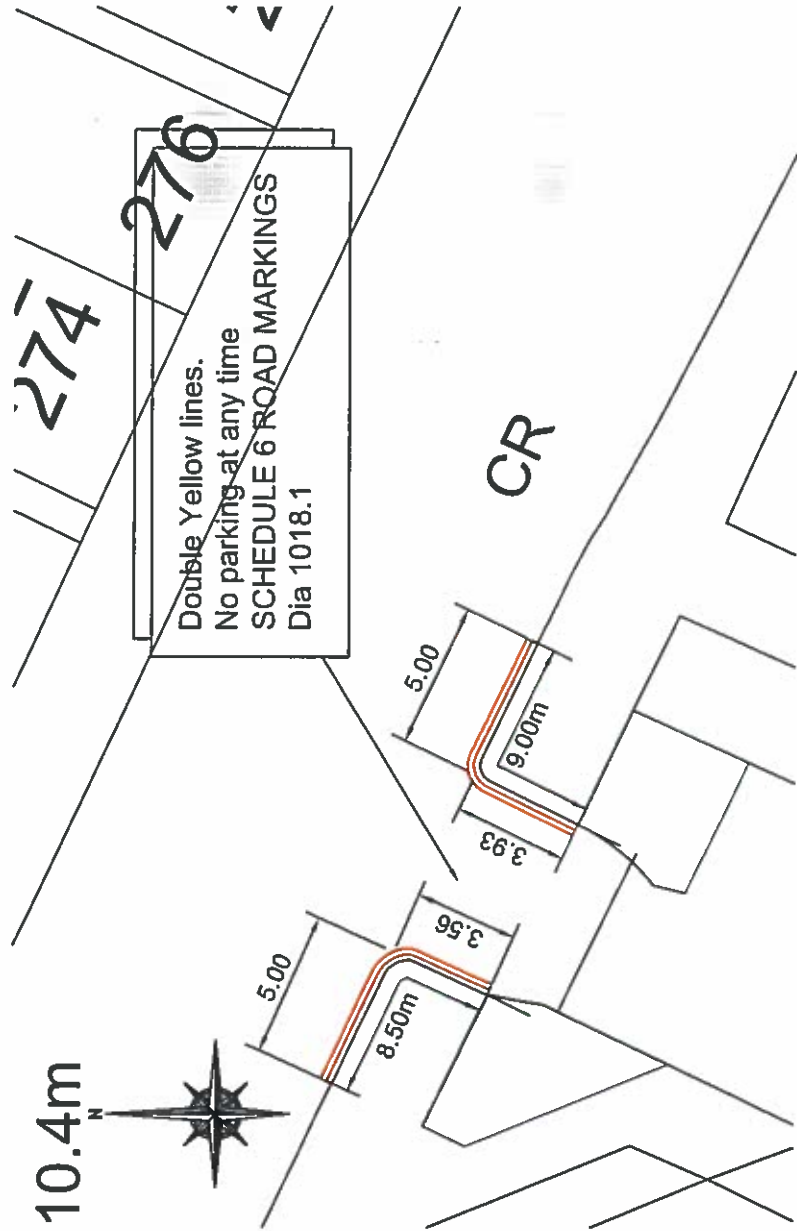
EAST  
REDRAWN

**PAISLEY DRIVE  
PROPOSED DOUBLE YELLOW  
LINES**

Project No. 14000014  
Drawing No. 14000014  
Drawing Date: 14/03/14

DRG. NO.

DRG. NO. 8FC/EAST/W14/PD/YL/WLB001



**EDINBURGH**  
THE CITY OF EDINBURGH COUNCIL

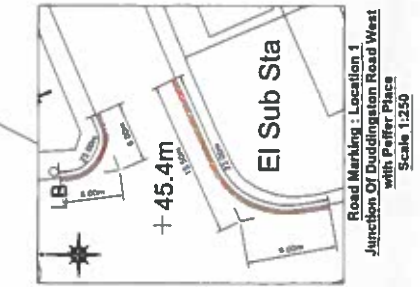
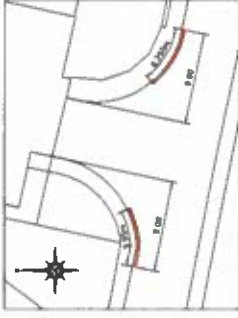
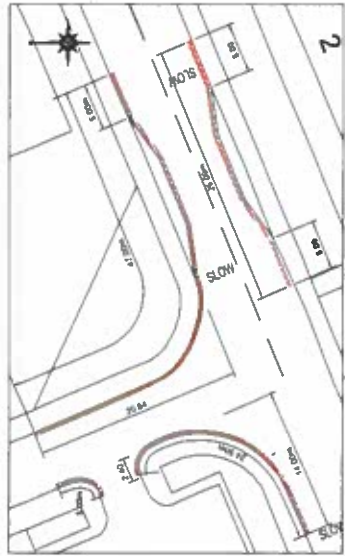
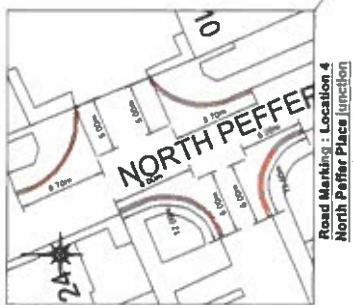
The City of Edinburgh Council  
East Neighbourhood Office  
101 Middle Mains Road, Edinburgh  
EH16 4ZG Tel. No. 0131 - 529 -3111

East Neighbourhood  
Environment  
Team

**257 PORTOBELLO HIGH  
STREET  
PARKING RESTRICTIONS**

Date: April 2014  
Scale:  
Job No.  
Drawn by: KDA  
Checked by: AM

**Drg No. W17/002/RM/APR 2014**



**PEPPER PLACE : LOCATION PLAN**  
SCALE 1:750

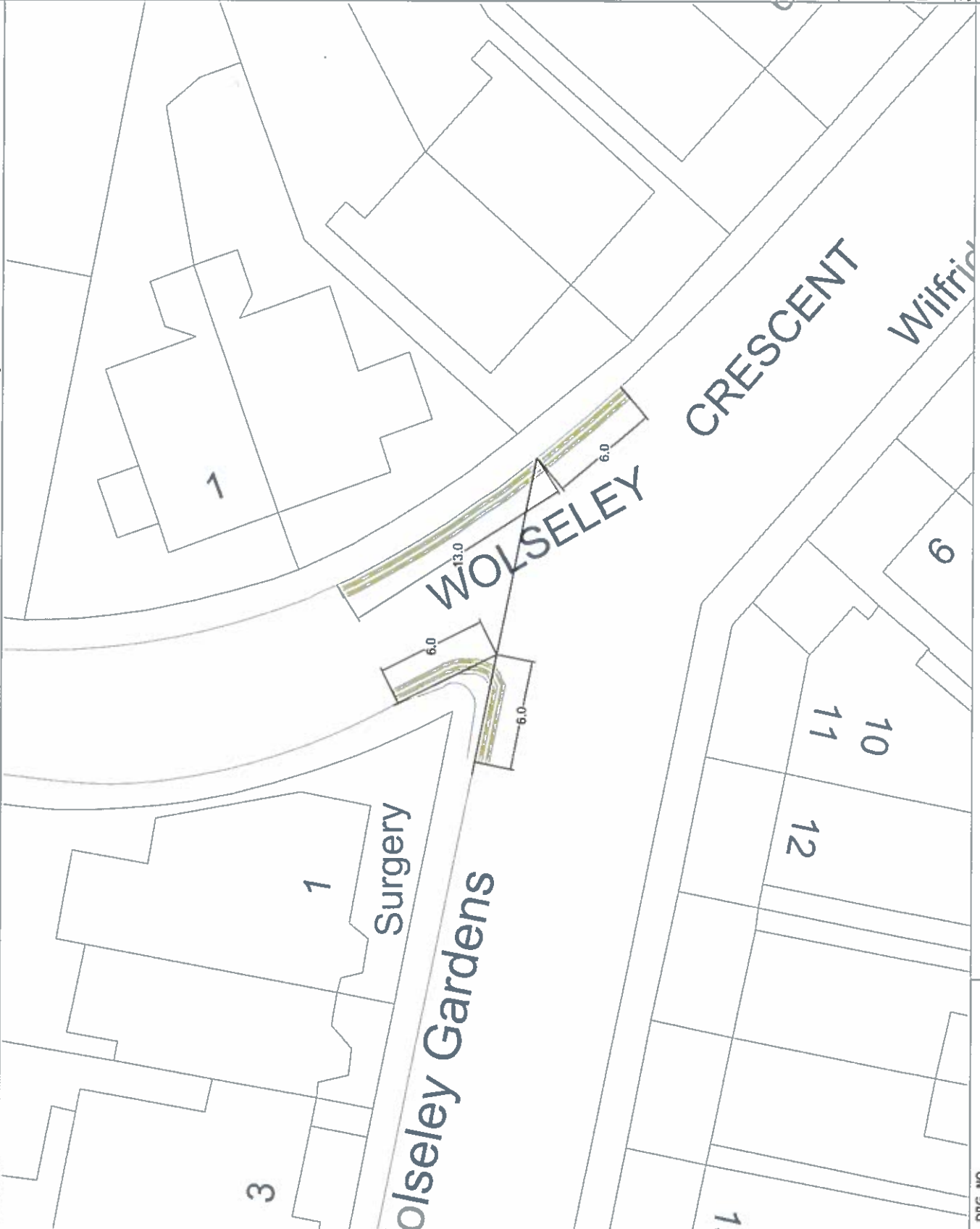
THE CITY OF EDINBURGH COUNCIL	
East Neighbourhood Environment Team	
Approved by: [Signature] Date: 28/04/2014	Approved by: [Signature] Date: 28/04/2014
<b>PEPPER PLACE          PROPOSED PARKING          RESTRICTIONS</b>	
<b>Drng No. W17/001/RM/Apr 2014</b>	

DRG. NO.

SERVICES FOR COMMUNITIES

DRG. NO.

NOTES:



DRG. NO.

DRG. NO. SFCENW14WGD7YUWLB001

REV	DATE	BY	CHKD	LEVEL

**EDINBURGH**  
THE CITY OF EDINBURGH COUNCIL

SERVICES FOR COMMUNITIES  
The City of Edinburgh Council  
101 Middle Row  
Edinburgh EH1 1DS  
Tel. No. 0131 225 3111

1437  
M25040000

**WOLSELEY GARDENS  
PROPOSED DOUBLE YELLOW  
LINES**

Drawn By: [blank]  
Checked By: [blank]  
Date: [blank]