

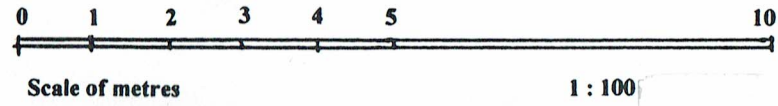
PROPOSED VARIATION TO CONSENT Nos 19/03841/FUL
AND 21/01717/FUL FOR A CAFE CLASS 3
TO FORM A SMALL WINDOW EXTENSIONS

JTA PLANNING DRG No4
John Tod Associates
ARCHITECTS
EDINBURGH
JOHN A TOD Dip Arch
Registered Architect
59 Edinburgh Road
Musselburgh
East Lothian
Scotland EH21 0EE
Tel: 0131-665 8147
Email: todyoung61@btinternet.com

84 JOPPA ROAD
EDINBURGH EH15. 2ET.

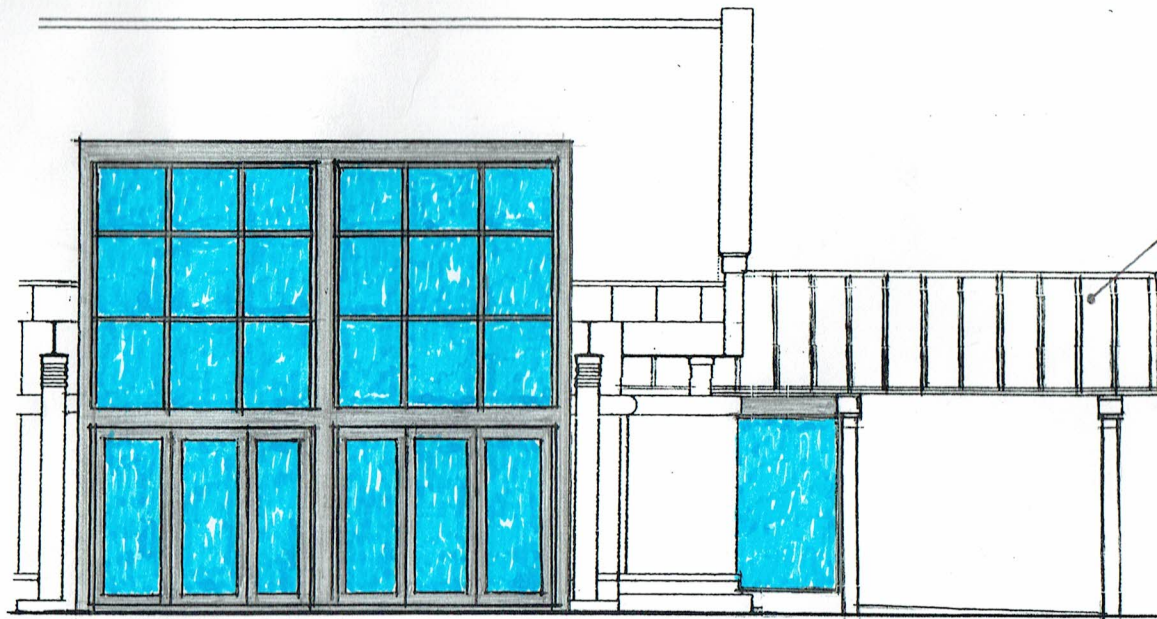
JOPPA ROCKS
FOR H. MURDOCHY.

PROPOSED ELEVATIONS



PROPOSED WEST ELEVATION

All new fascias, glazing sections, windows
and door are to be finished in dark grey
gunmetal colour

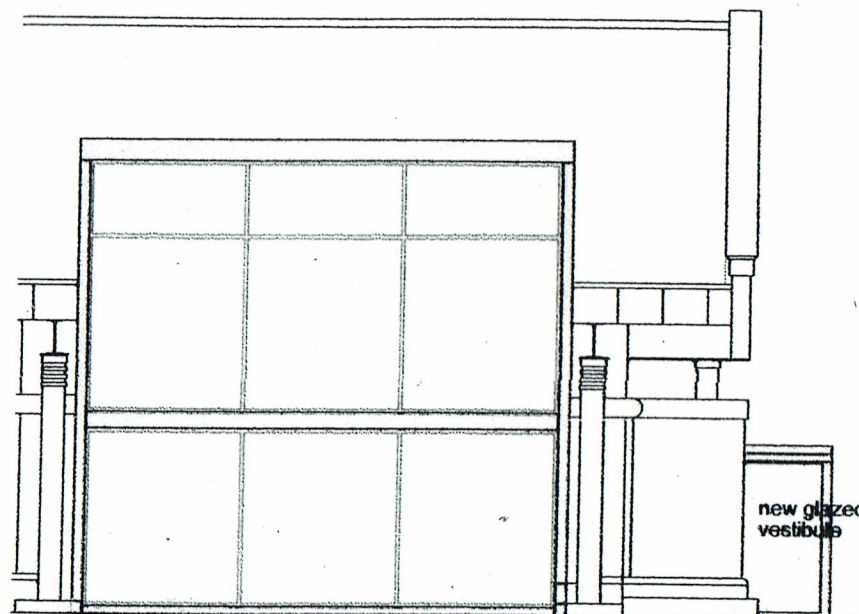


PROPOSED NORTH ELEVATION

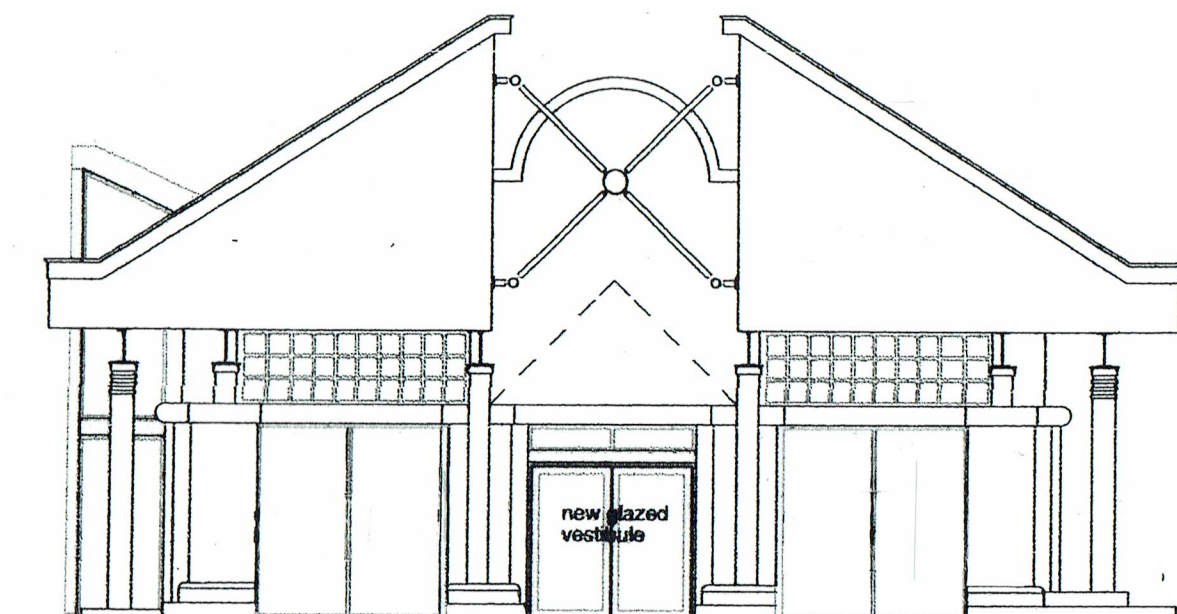
Existing canopy from original construction to be retained



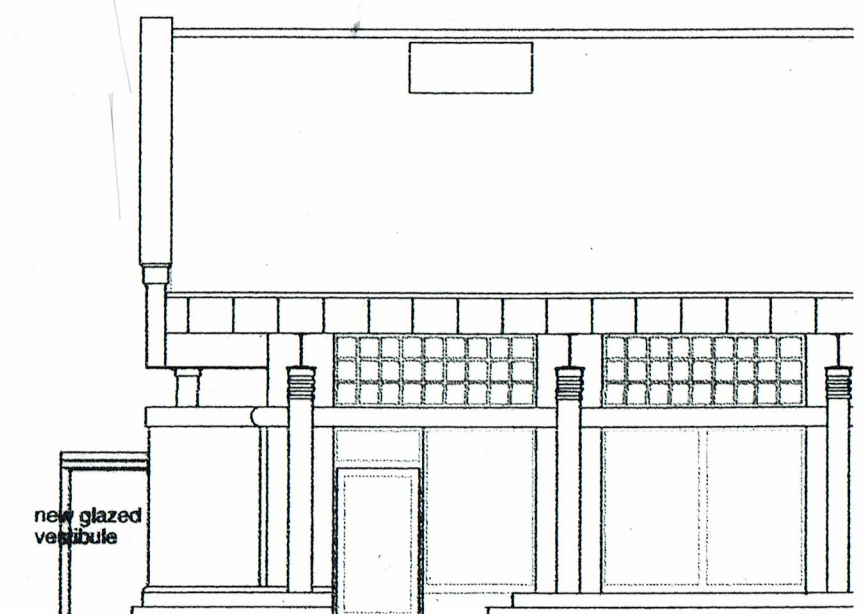
PROPOSED SOUTH ELEVATION



APPROVED NORTH ELEVATION



APPROVED WEST ELEVATION



APPROVED SOUTH ELEVATION