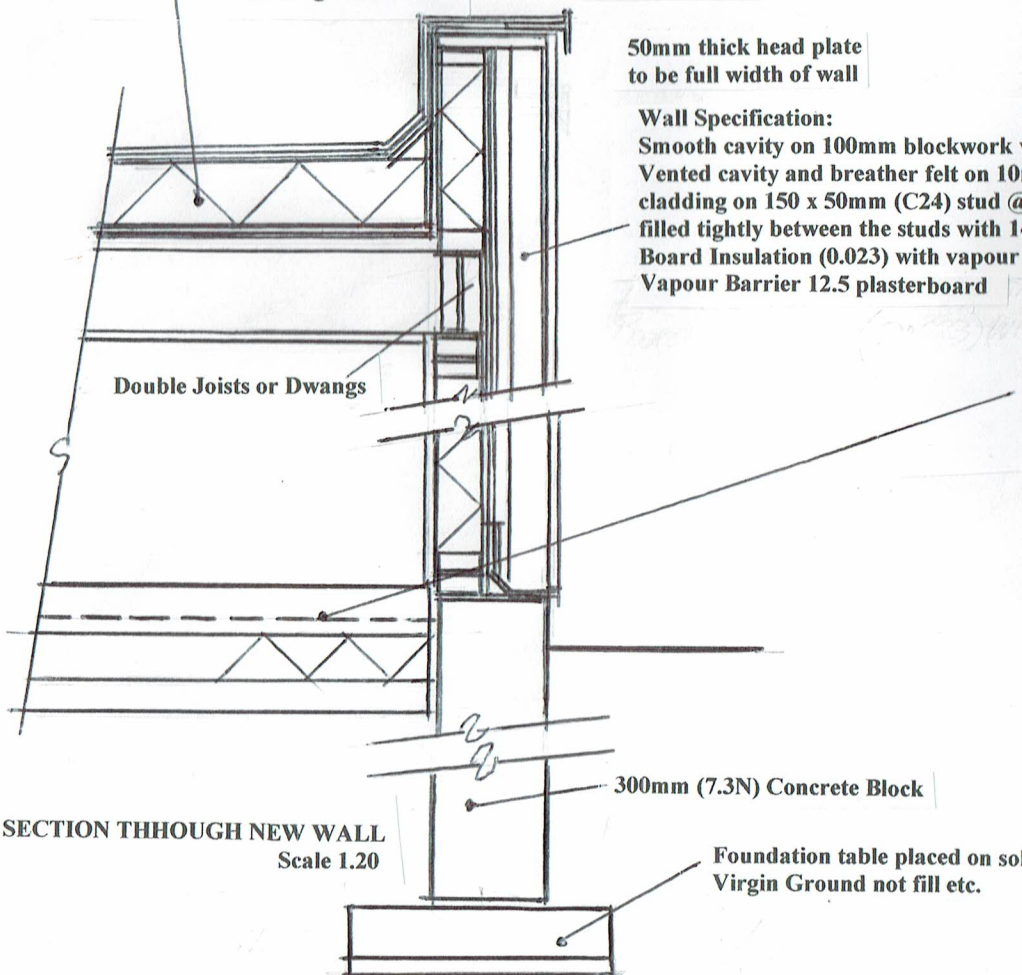
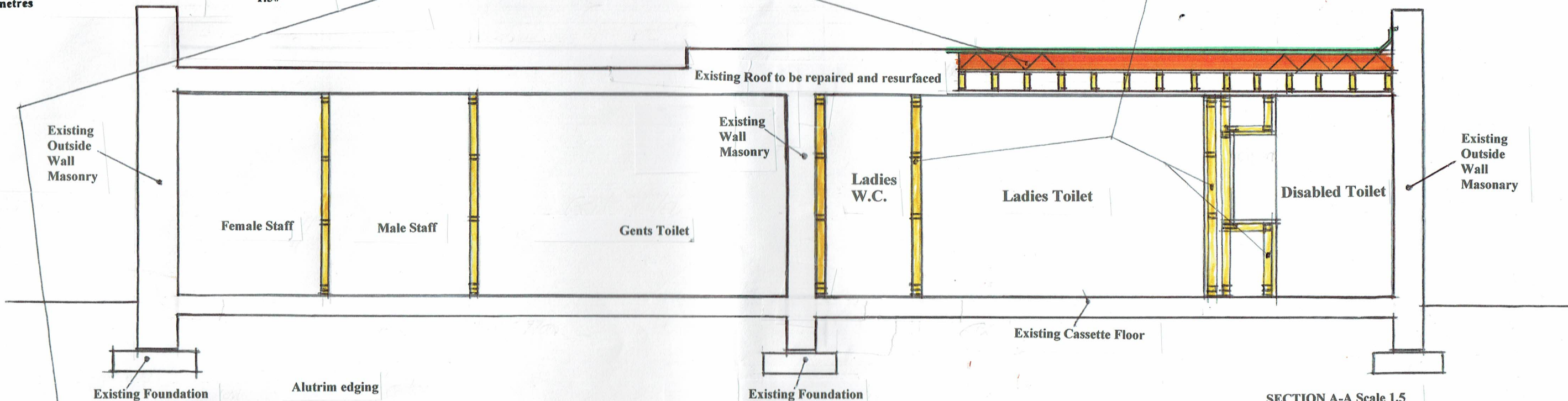
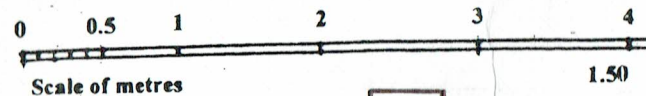


**PROPOSED ALTERATIONS AT THE BOATHOUSE  
 3 KINGS PLACE, EDINBURGH, EH15, IDU.**

**Roof Specification:** 3 layer mineral felt A-C Fire rated on 200mm Ridged Board Insulation (0.023) on 18mm O.S.B. Decking on declivities on 250 x 50mm (C24) Joist at 400mm ctrs and clad on the underside with a vapour barrier and 12.5mm plasterboard skim coated

All new stud partitions are to be formed in 95 x 45mm C.L.S @ 400 ctrs & filled Solid between the stud with Rockwool of a Mass of at least 10kg m3 & clad on both sides with 12.5mm thick plasterboard skim coated for painting



**New Concrete Floor Specification:** 100mm (C35) concrete on 200mm Ridge Board Insulation (0.023) On D.P.M. which is fully linked to the existing DPM's on sand blinded 100mm well consolidated Type 1 hardcore

